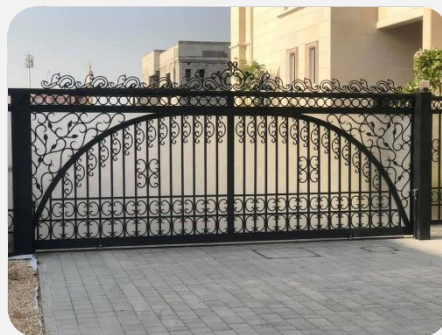




Al Wadi Aluminium Works Shop (L.L.C)

We do all kind of Aluminium, Glass Dec & Aluminium Cladding Work.

Pre-Qualification Document



P.O. Box: 150084, Ind.17th, Sharjah, UAE. Tel: 06-5426777, Mob: 056-7104595,
Fax: 06-5426726 Email: Info@alwodialuminium.com, www.alwodialuminium.com.

A Brief Introduction to “AL WADI ALUMINIUM LLC”

Al Wadi Aluminium LLC was founded in the United Arab Emirates in 1982 by Mr. MOHAMMAD NAZIR, since then our operation has started from zero to now established a good company after 35 years of quality work in UAE

We have executed projects such as Hospitals, Laboratories, Schools, Palaces, Hotels, High Rise Buildings, and Villas etc.

The Company main activities can be broadly classified as follows:

Manufacturing:-

- Supply & Installation of all kinds of Aluminium & Glass work.
- Automatic System products manufacturing facilities for distribution in Middle East.
- Manufacturing / distribution of Cast Aluminium Gates & Cast Aluminium Handrails under license for all Middle East Market.
- Supply of Curtain Walls & Double Glazing & installation of Skylight for all Middle East Market.
- Supply and Installation of Aluminium Pergolas.
- Supply and fixing of all kind of Aluminium and Glass handrails.
- All kind of Frameless staircase handrails.
- 10mm / 12mm Shower partition.
- Aluminium ACP Cladding work.
- Stainless steel welding work.

Our Mission: -

- At AL WADI, we're building customer relationships into mutually beneficial partnerships. We're continually working to offer products and services to meet market needs, recognizing that our success is dependent upon our customer's satisfaction.

Al Wadi LLC follows an on-going program of continuous improvement in all facets of business and operations.

We strive for constant:

- Enhancements in product – to remain at the forefront of a competitive market place.
- Advances in management and processes – for improved service and efficiency.

Our Values:

- We are in Business forever.
We all have the responsibilities to leave the business stronger than when we started. Continuous improvement is necessary for growth and continued future success.
- Our employees are our most important asset.
Al Wadi's strength is in its people. Competent people are the foundation of our company. We are committed to developing and enhancing employee's capability through training and education.
- Knowledge is power
Effective communication is absolutely necessary to manage our business and satisfy the needs of our business partners. Information sharing builds trust and confidence and leads to better decision making
- Making a profit is an honorable endeavor
Profit is a necessary ingredient for a successful relationship with our business partners. All of the partners (customers, suppliers and employees) must benefit in these own way to foster a lasting relationship.
- We value quality in all what we do.
Quality is the personal responsibility of each employee.
- Our word is our bond
We honor our commitments to customers, employees, suppliers and the communities in which we live and work for. The key ingredient in all of our commitment is integrity.

Our vision:-

- To be the preferred source in the market that we serve by supplying products and services of superior value that exceed customer expectations.
- To be a preferred employer by creating a challenging environment for our employees based on dignity and respect that provides opportunities for personal growth and rewards accomplishment.
- To be a valued partner to our suppliers by working together to achieve mutual objectives.
- To be responsible and supportive corporate citizen in the communities in which we operate.

Client: New East General Trading.
Consultant: MJU ENGINEERING CONSULTANT
G.C.: ZB Building Contracting.
Value: 1,500,000 AED
Scope: Aluminium curtain wall, Cladding, Top hinge windows,
Doors, Stainless steel Canopy.
Status: Completed



List of References within U.A.E.

G+1 13 Villas at JVC Dubai

Constructor: Elite Landmark Building Cont.

Consultant: 3 Dimensions.

Scope: Aluminium Sliding Door, Curtain Wall, skylight, pergolas, Balcony, Glass Handrail.

Status: Completed

Value: 800,000 AED



List of References within U.A.E.

13 no of G+1 villas JVC Dubai.

Contractor: Local Creative Contracting
Consultant: Next Engineering
Scope: Aluminium Sliding Window + Curtain Wall + Skylight
Status: Finished
Value: 150,000 AED



EMERALD PALACE

Client: Mohammad Al Hashmi

Consultant: Future Art

G.C.: Aashiyana Contracting

Scope: Aluminium Curtain wall+ Sliding Door + Sliding Window + Aluminium Handrail + Staircase Handrail + Aluminium Pergola + Glass Shop Front + Louver Door.

Status: Under Construction

Value: 2000,000 AED



Client: MR. KHALIFA

Consultant: Sharjah Consultant

G.C.: ROBO CONTRACTING

Value: 200,000AED

Scope: Aluminium curtain wall sliding windows, doors, stainless steel
Balcony, Cast Aluminium Main door, Handrail

Status: Completed



List of References within U.A.E.

G+1 Villa Warqa 4

Client: Mr. Abdullah Juma
G.C.: Cosmos Contracting
Value: 220,000 AED
Scope: Fix + Top hinged Window with Georgian Bar + stained Glass



List of References within U.A.E.

Client: Mr. Rabea
Consultant: Adnan Saffarini , Sharjah
G.C.: Al Abraj Contracting
Value: 750,000 AED
Scope: Aluminium Curtain Wall, Hinged Windows, Doors, frameless balcony, Aluminium Cladding. External Decor
Status: Completed



List of References within U.A.E.

Client: Mr. Tehnoon
Consultant: Adnan Saffarini Sharjah
G.C.: Al Zawiah Building Contracting
Value: 325,000 AED
Scope: Aluminium Curtain Wall, Top Hinged Windows, Doors, frameless balcony, Aluminium Cladding. External Décor, Stained Glass
Status: Finished

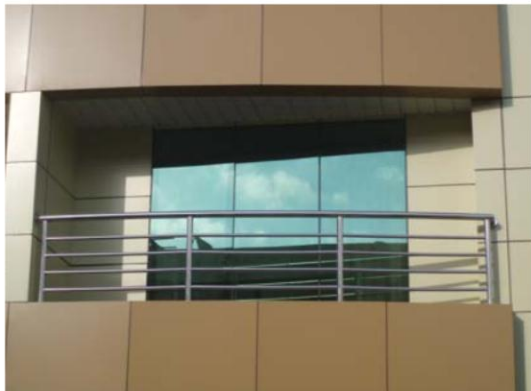


List of References within U.A.E.

RESIDENCE BUILDING G+7 + ROOF on plot no. 124.385, AL MURQABAT

Client: MARYAM AHMAD MOHAMMAD NASSER LOOTAH
Consultant: ENGINEERING CONSORTIUM
G.C.: AL TAAMIR GEN. CONTRACTING
Value: 4,400,000 AED
Scope: Aluminium curtain wall, hinged windows, doors, stainless steel Balcony, Aluminium Cladding.

Status: Delivered on February 2006



List of References within U.A.E.

RESIDENCE BUILDING G+6 at AL BARSHA FIRST DUBAI

Client: H.E. DR. KHALIFA MOHAMMAD AHMED SULEIMAN
Consultant: ARKITEKNIK
G.C.: AL OROBA CONTRACTING CO.
Value: 4,500,000 AED
Scope: Aluminium sliding windows, doors, frameless balcony SYSTEM:
Status: Delivered on Sep. 2006



Some Other Projects We Have Completed You can see...



Town House 1 & 2 World Island Jumeira.



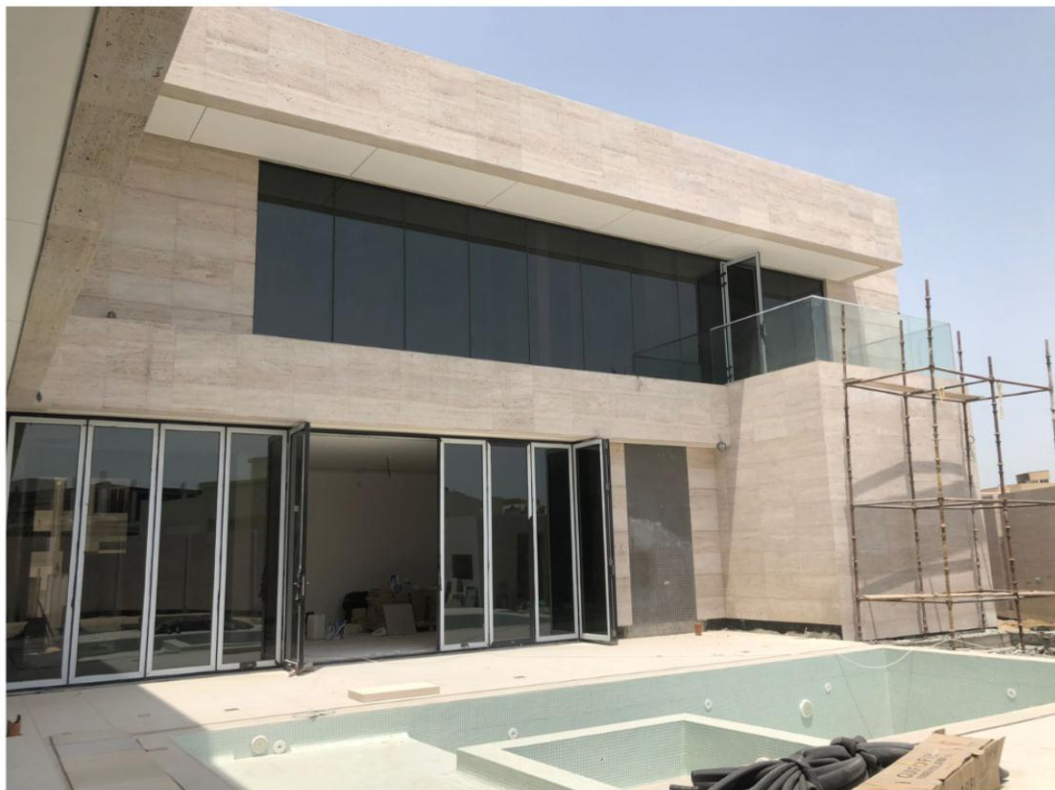
2 no's of Townhouse in world island Jumeira Dubai.

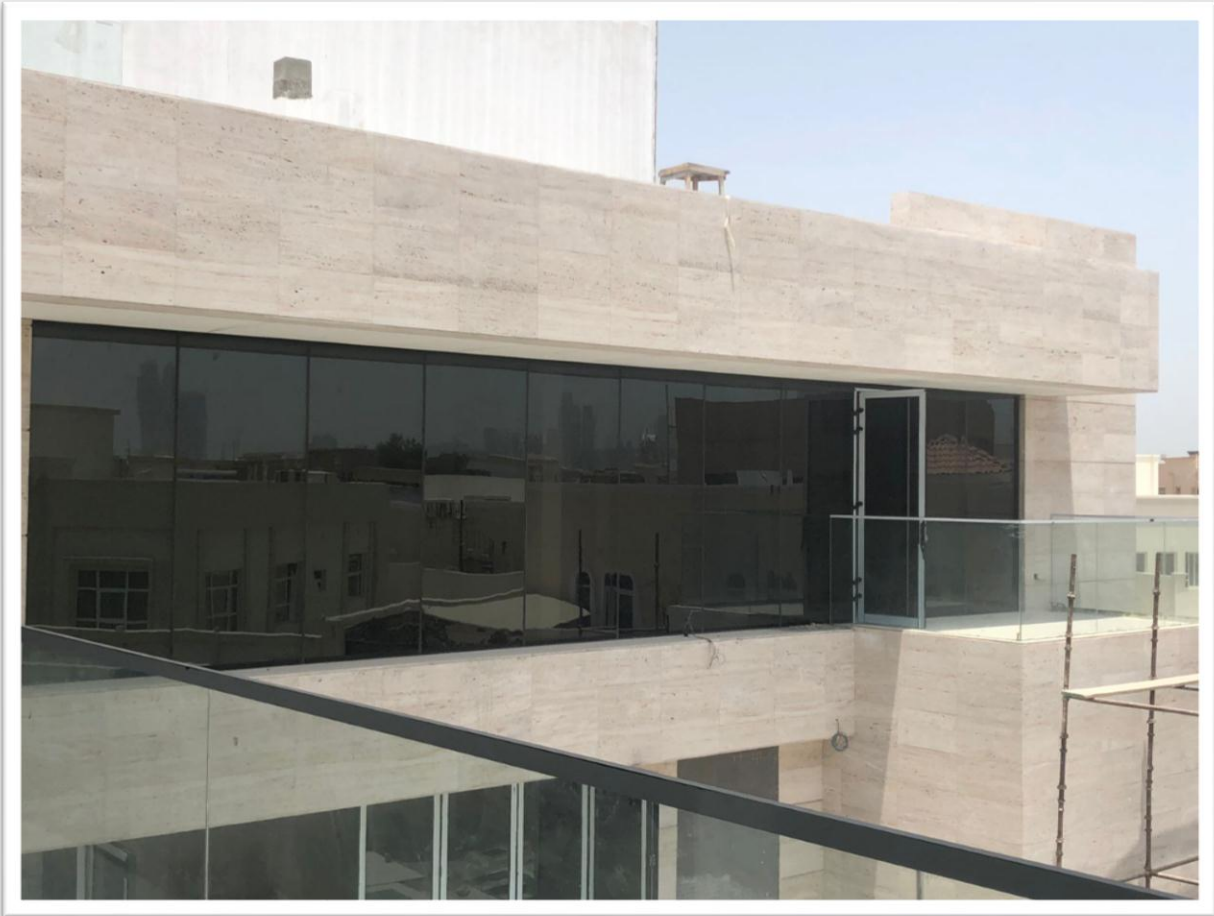






Aluminium White Pergola

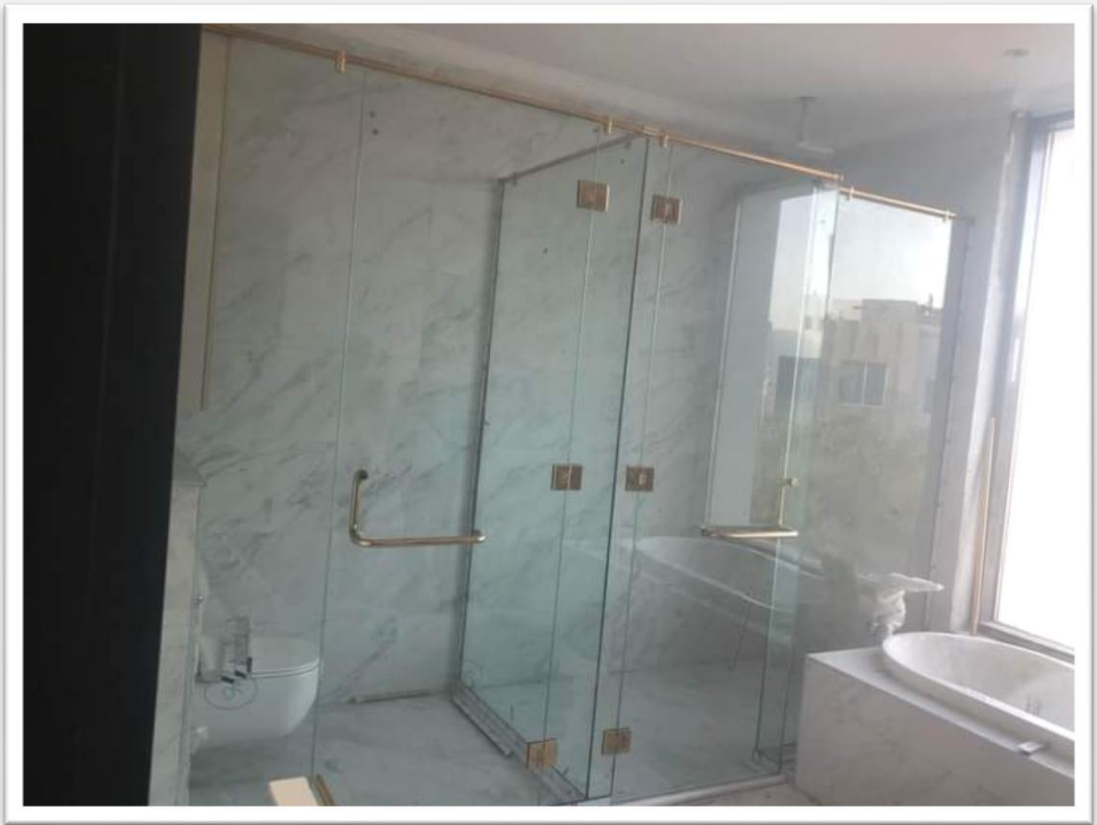




Balcony Glass Handrails



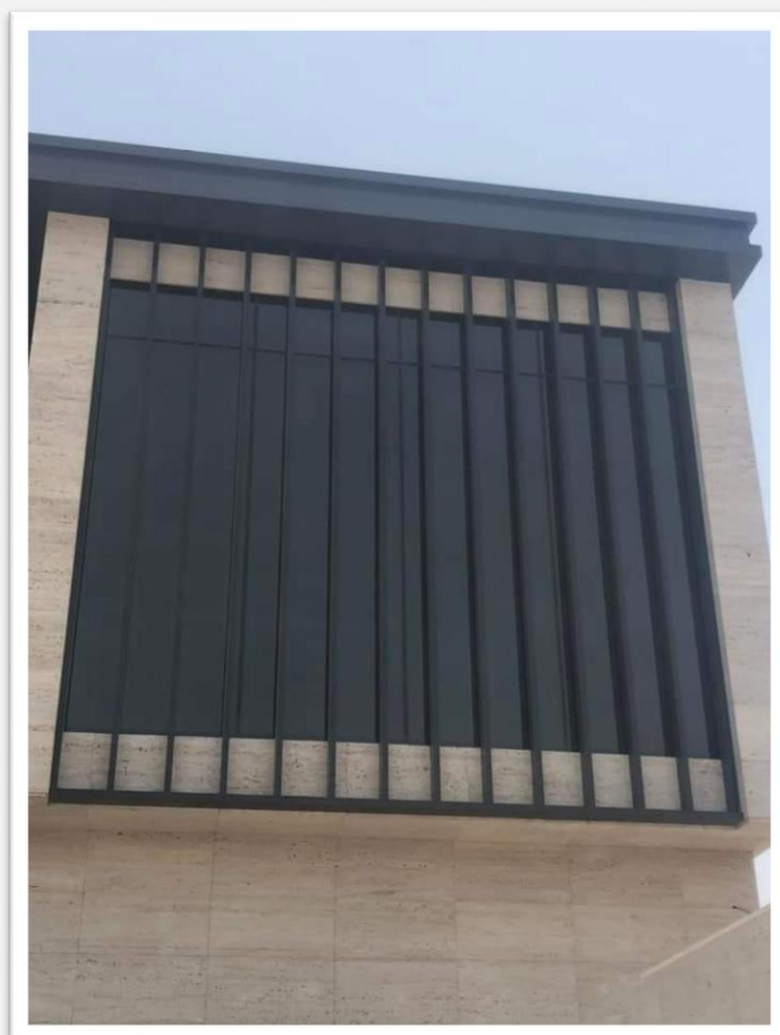
Shower Partition



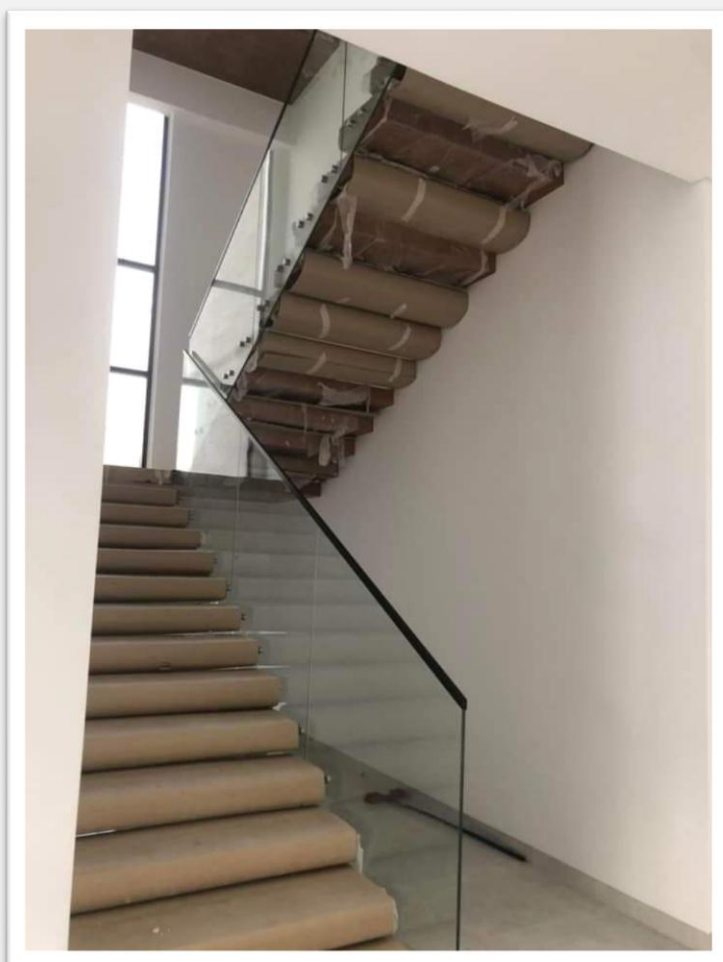
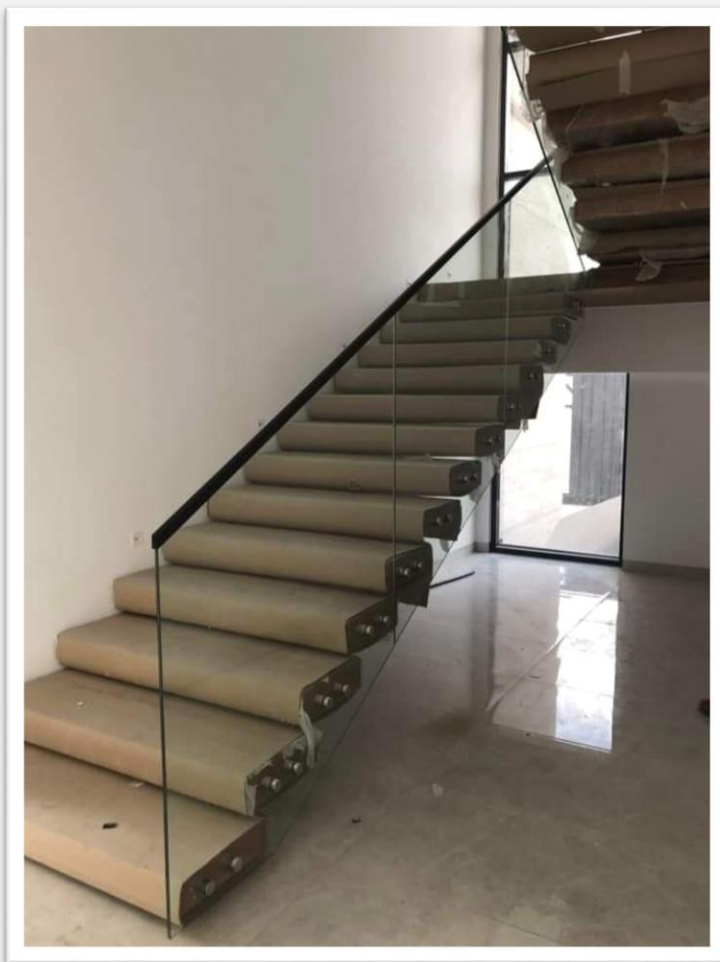
Golden Shower Partition



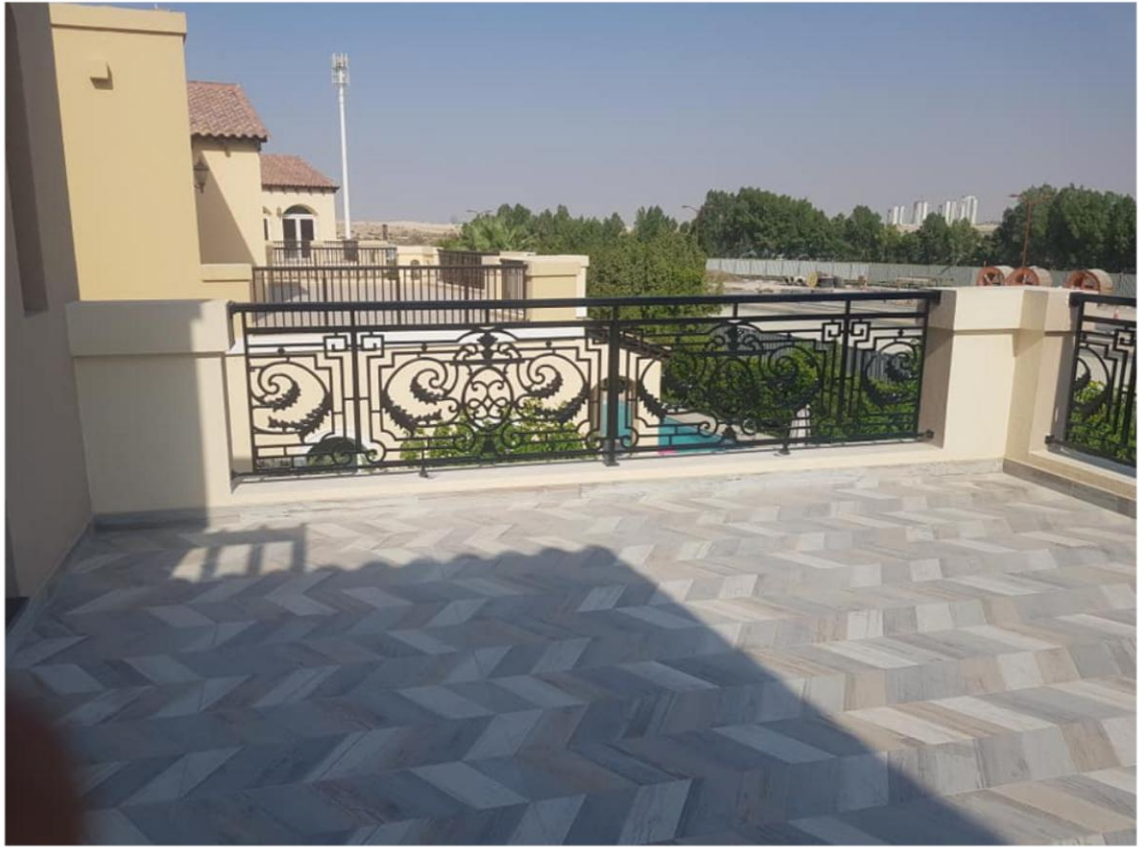
Shower Partition



Aluminium Cladding



Staircase Laminated Glass Handrails



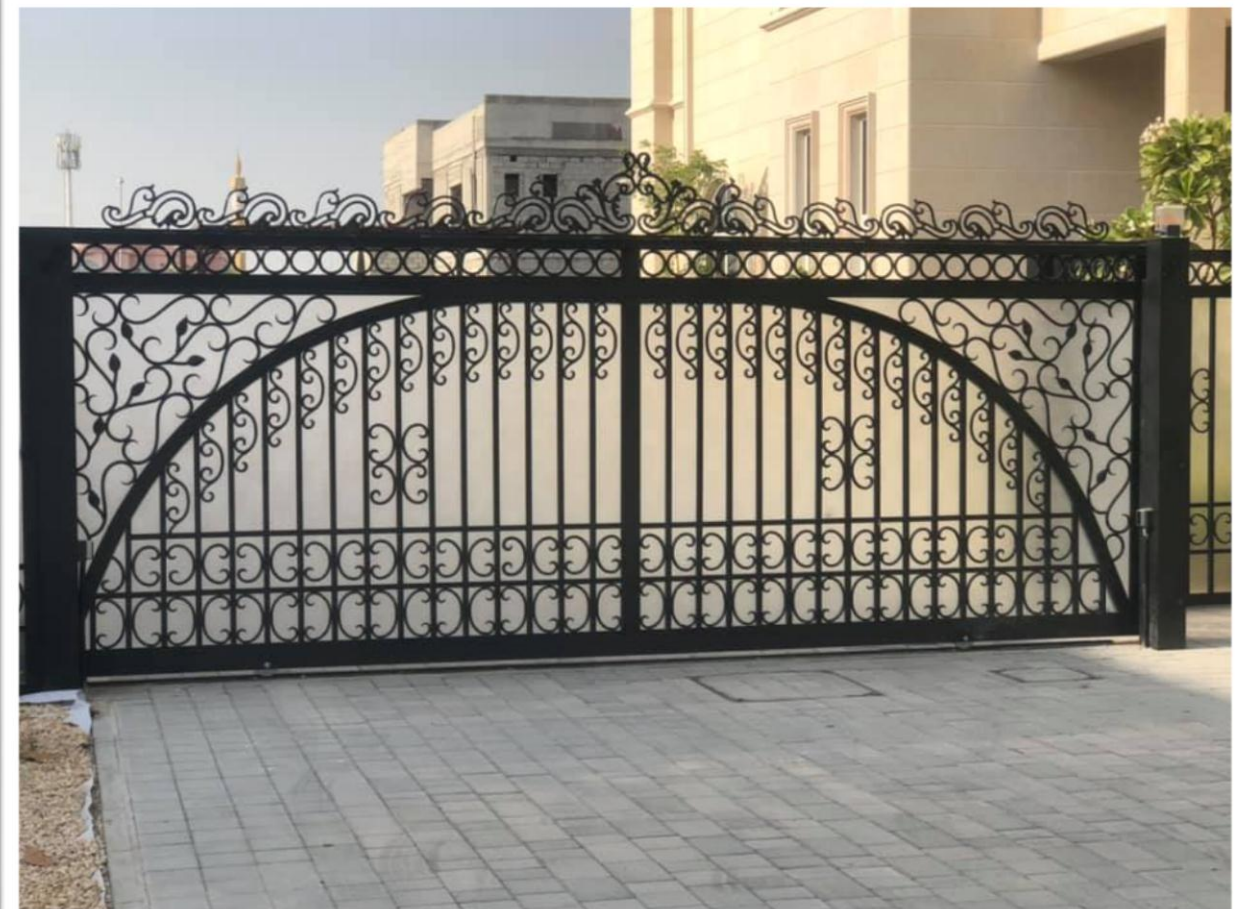
Cast Aluminium Handrail



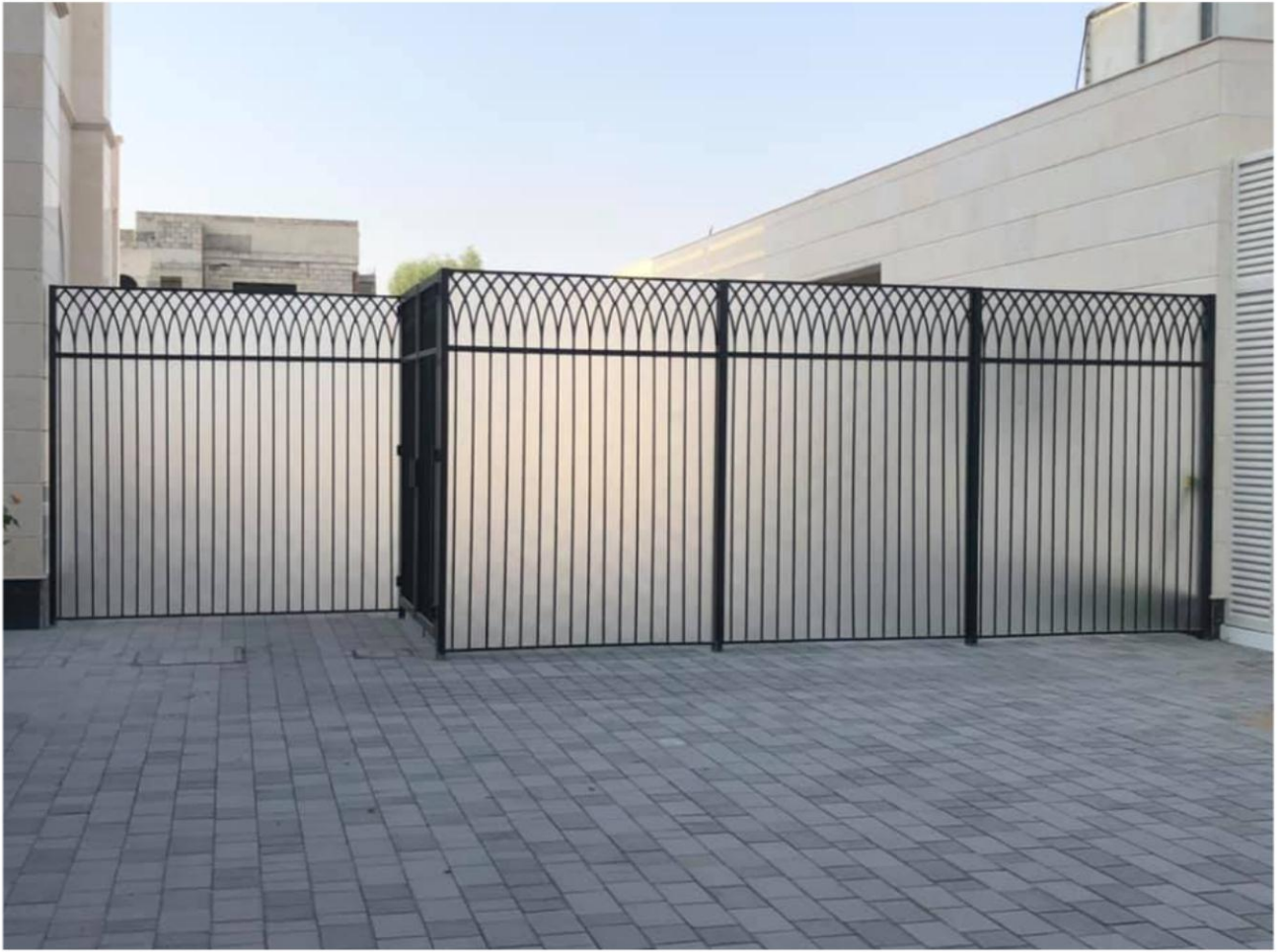
G+1 Villa for local creative Contracting in NAD Al Shiba Dubai.



Aluminium and Glass Pergola



Cast Aluminium Gate



Aluminium Fence + Sliding and Hinge gate

Scope:

This process instruction is describing how the Quality management system shall be reviewed.

Objective:

The objective of this system is to assist Al Wadi Aluminum Co. LLC to comply with the standards of documentation and performance required to ensure quality in the process

Procedure:

1. ASSESSMENT OF SUPPLIERS & SUB-CONTRACTORS:

- Suppliers listed within Al Wadi Aluminum Co. LLC. Supplier Register have been accepted either on historical performance or vendor assessment Vendor assessment will be completed in the form of a
- Q.A. Questionnaire and site visits where necessary.
- Suppliers will be monitored on a continuous basis to determine continued usage and required inspection level.
- Where Al Wadi Aluminum Co. LLC. Use experienced quality external installation companies, these have been accepted on historical performance or by inspections of previous work undertaken prior to a subcontractor being awarded.

2. RECEIVING, INSPECTION AND TESTING:

- Where components are delivered to site from sub-contractors, these will be deemed to have undergone an inspection process against quality of goods and manufacture.

- Goods delivered direct from a supplier must be visually checked for damage and checked for size and quantity.
- Where goods are delivered direct to site, Delivery Notes must be returned to Al Wadi Aluminum Co. LLC. Head Office to allow processing. Copies of Delivery notes are to be retained on site.
- Where goods are found to be damaged, complete a Rejection Note together with a Non-Conformance Report which must be returned to Al Wadi Aluminum Co. LLC. For prompt action. Rejected materials must be returned to the factory under cover of a signed Site Material Return Form.
- Ensure that all goods received from the factory bear “Quality Passed” sticker that should be visible.

3. URGENTLY REQUIRED MATERIAL

- Where goods delivered to site do not tally with the delivery note, inform Stores Department immediately, and follow up shortage with a Material Requisition Note, stating materials, reasons for requirement and quantity required.
- Where goods require re-ordering, Purchasing Department will pass requisition to the relevant sub-contractor or purchase the required material.

4. IN PROCESS INSPECTION AND TESTING

- Preparatory Inspection: Before start of any installation work, site QC representative shall carry out preparatory inspection to ensure that the site as-built condition is suitable for processing with installation of frames.
- All employees with Al Wadi Aluminum Co. LLC. Have a responsibility for the quality of their workmanship and to highlight any damaged or sub-standard products.
- Ongoing installation inspections will be recorded on Site Check Sheets and as such random inspections will take place by those responsible. Any rejected goods will be segregated and Material Rejection Notes raised to allow for Concession or complete re-manufacture.
- “On site” inspections will be carried out using on-site personnel where applicable, together with the appropriate Site Control Checklists. Random inspections will be undertaken on an on-going basis. Rejects or details that depart from those laid down in the Specification/ Drawings must be recorded on a Rejection Forms or Non Conformance Report, which ever appropriate.

5. CORRECTIVE ACTION

- Corrective action, whether on site or in the manufacturing process will be deemed necessary where adverse trends are identified? Corrective action may be required in retaining of personnel or re-manufacture of components.
- Any corrective action required issued will be recorded on the Non Conformance Report in the case of materials and in writing to the Client by the projects Department where complaints are received from the Client.

6. HANDLING, STORAGE, PACKING & DELIVERY

- All personnel handling materials must do so in accordance with laid down Company procedures. Do not attempt to move heavy or awkward loads unless suitable assistance is provided.
- Materials should be identified at all times to help identification and correct installation. Pallets of materials should have a contents list fixed externally to identify components and contents.
- Where damage or deterioration is observed this must be reported to the Contracts Manager on the Damage Report for corrective action to be undertaken.
- Goods must be packed to minimize damage during and whilst in transit to site.

- Adequate storage space must be made available on site or within the manufacturing area to prevent damage and deterioration. The Projects Manager is responsible for such action on site and production manager at the manufacturing plant.

7. RETENTION OF RECORDS

- All details such as Construction Issue / as built drawings, test reports, check lists and Contract Documentation will be retained by the Company for a period, not less than 5 years.
- If required according to the Main Contract specification, the period of retention is extended appropriately.

8. SUB-CONTRACTORS & INSTALLATION

- Any Sub Contractors used by Al Wadi Aluminum Co. LLC. Shall be incorporated within our Quality Plan.

9. METHOD STATEMENT (CONSTRUCTION)

- The Method Statement for the Installation Works is issued under a separate submittal.

10. REPORTING DAMAGE BY OTHER TRADES / DAMAGE TO WORKS

- In the event that damage has occurred by others to our work or materials, Damage Reports will be transmitted by Al Wadi Aluminum Co. LLC. To the Project Manager stating the nature of damage, and where possible who caused the damage?

11.DOCUMENTS OF EXTERNAL ORIGIN

The national & International standards being referred in the applicable contract specifications shall be referred to & us.



Al Wadi Aluminium Works Shop (L.L.C)

We do all kind of Aluminium, Glass Dec & Aluminium Cladding Work.

Contact us

Corporate Name

Al Wadi Aluminium Work Shop (L.L.C)

Company Ownership

Year of Establishment 1982

Office Address

Ind. 17, Sharjah – U.A.E.,

P.O. Box: 150084

Telephones and Fax

Tel: 06-5426777

Fax: 06-5426726

Email: info@alwadialuminium.com

www.alwadialuminium.com